

TECHNICAL DATA

G/LL146 hydrostatic contents gauge

FOZMULA
INNOVATION IN SENSORS



The **Model G/LL146** is an open hydrostatic gauge designed to continuously display the liquid level of a tank. Incorporating a remotely operated air pump, the **G/LL146** requires to be primed to ensure the accuracy of a reading.

Using a polyurethane capillary tube to measure the tank level, the gauge is supplied in liquid depth ranges as shown below:

SPECIFICATION

Construction

Body: Nylon 6
Window: Polycarbonate

Mounting:

Via a self centering locking spin ring
Gauge connector to tank via a 1/8" O.D. capillary tube
Panel cut-out: Ø53mm (2.1")
Max panel thickness: 8mm (0.3")

Other parameters

Accuracy: 5%
Max depth of tank: See table below

Fluid Types

Fluids compatible with Polyurethane

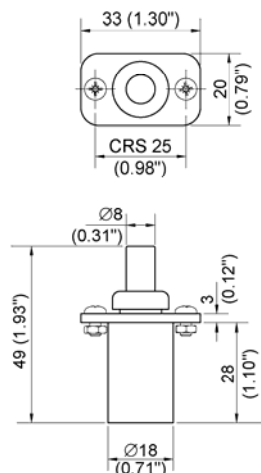
Environmental Ratings

Temperature: -20°C to +55°C (-4°F to +131°F)
Sealing: IP54 from front of gauge only
Vibration: 20g @ 3300 rpm

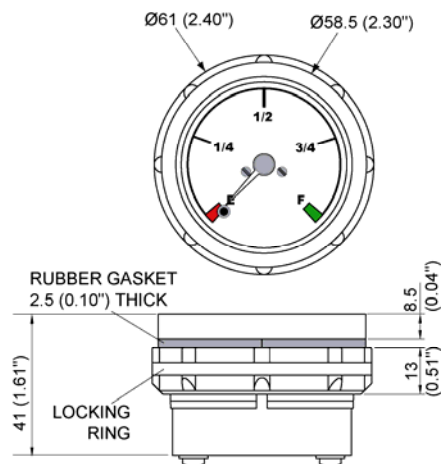
Model	Min/Max tank depth - diesel	Min/Max tank depth - water
G/LL146/12	0 – 875mm (0" – 34")	0 – 700mm (0 – 27")
G/LL146/13	875 – 1850mm (34" to 72")	700 – 1440mm (27" to 56")

Note: The G/LL146 is not suitable for tanks less than 300mm (12") deep.

Pump assembly



Gauge



Berrington Road | Leamington Spa | Warwickshire CV31 1NB | UK

Tel: +44 (0)1926 466700 | Fax: +44 (0)1926 450473 | www.fozmula.com

www.fozmula.com

E. & O. E.© Fozmula Limited. November 2008 Issue No. 1

Since the suitability of these products depends upon a wide range of factors not in our control, Fozmula Limited expects and understands that you will conduct the testing and evaluation necessary to determine that these products are suitable for your application. Whilst every effort is made to ensure the above details are correct at the time of printing, Fozmula Limited reserves the right to make material changes, and or technical changes without notification.